

SPINK COUNTY

Discover
Spink County

A special publication of...



^{the} Redfield Press®

WELCOME TO DISCOVER SPINK COUNTY 2020!

The annual Discover Spink County special section of the Redfield Press features the towns and communities that make up Spink County and all that it has to offer. Last year, I featured Glendale and Spink Colonies in the Discover Spink, and it was a great adventure! This year, with the Coronavirus pandemic spreading across the U.S., many organizations, businesses, schools, churches and restaurants in the area have been shutting down. While covering the virus, I have not been out and about Spink County to do a feature story for this special section. However, here at the press we decided to feature longstanding organizations and family businesses in Spink County that have built the county, brought it together, and made it what it is today. I hope you enjoy reading the 2020 edition of Discover Spink County!

Q&A FEATURING: The Spink County Historical Society

• How did your organization get started and when?

As early as 1900, citizens from different parts of the county banded together to form the Pioneer Association. They were concerned that many of the community's young people were losing their sense of local history. Those early settlers did

not want their story of floating down all their worldly goods over the Jim River at Belcher's Ford to go untold nor their living in sod houses or crude shacks to be forgotten. At the same time, Henry Hindersman had a private museum in his home on Humboldt Avenue (Main Street in the vicinity of Tom Gal-

lup's Cinema Theater) not limited to historic objects. This included mounts of birds and butterflies and sea shells. He built special glass fronted cabinets with added secret drawers and compartments to display his collections. These would later be displayed in the Carnegie Library basement and then in the halls and vestibules of the court house. In 1955 the Pioneer Association reorganized as the Spink County Historical Society. By 1957, they started building a mu-

seum south of the court house. In 1958, they moved, designating the first floor to glass fronted cases arranged by family donations of objects. The Hindersman's collection, including his handcrafted cabinets, also made its way to the museum.

• What is the purpose of your organization? Where do you meet?

The mission of our society remains much the same as those early members defined it: to display printed informa-

tion and objects relative to early Spink County. We meet monthly on the third Thursday at the Depot. May through October.

• How has your organization changed over the years/ what are some of the biggest changes?

Our membership has dwindled, and we definitely need more workers in the vineyard. We need more space in our museum.

• What are some unique or interesting historical facts about your organization?

Our treasurer, Jerry Hansen, has managed our check book for 40 years and has even survived an audit. One of our biggest financial contributor has been the Redfield fourth graders. Over the years they have donated much of the proceeds from their

wax museum to help with the Deiter School.

• What are some things your organization does for the community?

Along with financial assistance from the county, we are responsible for keeping the Spink County Museum open. We participate in the annual Fourth of July parade. Every summer, we sponsor a speaker/meal event in Frankfort that covers a wide variety of topics. That and a concession at CMHA's annual craft fair are our primary fund raisers. Our director has been doing historical posts on Facebook. Check that out—Spink County Museum.

SPINK COUNTY HISTORICAL SOCIETY/
pg. 3

We are open year 'round serving the full Dairy Queen menus, snacks and all the famous DQ specials including frozen cakes for all occasions.



REDFIELD DAIRY QUEEN

820 W. 3rd St.
Redfield, SD 472-1426



**You Need It?
We Have It!**

Fishing Tackle &
Equipment
Bike Tires & Tubes
RV Essentials

**REDFIELD
HARDWARE HANK**

Store Hours: M-F 8 am - 5:30 pm • Sat. 10 am - 3 pm
701 3rd St. West Redfield • 472-2550

All your supplies at one location.



Spink County Fast Fact:

In the early pioneer days of Spink County, communities would gather together and sing songs such as "O Dakota Land" about pushing through the hard times on the Dakota prairie with no rain.

SPINK COUNTY HISTORICAL SOCIETY/ from pg.2

•How many members do you currently have?

32, but many are lifetime members who live outside of the state.

•What are some things your organization is currently involved in?

Our present director, Kim Benning, and her staff of volunteer high school interns are busy putting the collection on a searchable data base.

•Please include anything else you would like to add.

We will have the Deiter School handicap entrance built. We still need help with some landscaping, but we do have a plan. We do thank Don Masat and his sons for shingling the Deiter school (actually with shingles from the old Redfield School). We should also have the Abby Gardner mural up this summer. Although we are only open from June-August, you can always find someone at the Depot to arrange a private tour.

I think our Society has the same concern that the Pioneer Club members had. We have a rich history in Spink County. Our little corner of the earth has produced three U.S. senators, a professional ball player, a concert pianist, CEOs of large companies, and supplied the lead geologist for Sanford Underground Research Facility, and that is just scratching the surface.

Chicago and Northwestern Depot in Redfield



FILE PHOTOS

Above, left, the Norwood Park station in Chicago, Illinois, formerly known as the Chicago and NorthWestern Railroad Depot, built in 1907. The Redfield Chicago and Northwestern Railroad Depot was built in the likeness of this Depot and dedicated in 1914.

The Chicago and Northwestern Depot in Redfield was dedicated on October 23, 1914. It was built in the likeness of the original C&NW Depot in Chicago, Illinois. Passenger trains serviced this depot until the early 1950's.

In 2002, the City of Redfield received a matching Federal Grant and began restoring the Depot. Today, railroad items, model trains, engines, artifacts, and a wealth of history can be found at the Depot.

Those who are looking for information on family or the history of Redfield can contact the depot. The Depot also regularly receives donations of family heirlooms and pictures.

The Depot can be contacted at 472-4566.

“Most of our early citizens wanted to and did take a risk. They wanted to dream and to build, to fail and to succeed. They would refuse to barter incentive for a dole. They would not change their freedom or dignity for a handout. They would stand erect, proud, to think and act for themselves.”

— Frank H. Packard

Tulare Country Meats



2 CONVENIENT LOCATIONS

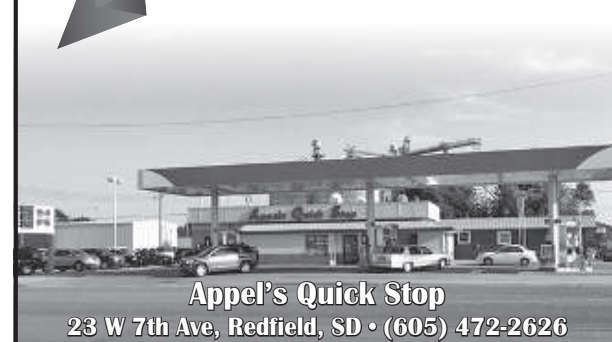
105 US HWY 281
TULARE, SD
596-4280

630 21ST ST SW
HURON, SD
554-3005



Let us help you

Discover Spink County!



Appel's Quick Stop
23 W 7th Ave, Redfield, SD • (605) 472-2626



Appel Oil
833 W 3rd St, Redfield, SD • (605) 472-0136

Q&A FEATURING: The Spink County Coalition

1. How did your organization get started and when?

The Spink County Coalition was founded in 2010 when several interested community members applied for a State Incentive Grant for Underage Alcohol Prevention.

2. What is the purpose of your organization? Where do you meet?

The Spink County Coalition is committed to supporting healthy lifestyle choices through education, collaborative planning, and community involvement. The Coalition has secured several grants for substance use, including opioid and tobacco prevention. We have also received grants for impaired driving prevention as well as a Community Innovation grant for critical response for

agricultural mental health, natural disasters, and community trauma. The Coalition meets monthly the third Monday of the month, alternating between noon at Leo's Good Food and 5:15 p.m. at Our Savior's Lutheran Church.

3. How has your organization changed over the years/ what are some of the biggest changes?

We have gone from focusing on underage alcohol use to responding to other projects that support healthy lifestyle choices including mental health, other drugs, critical incident response. We have built some great partnerships with the school, law enforcement, health care providers, and the agricultural community to name a few.

4. What are some unique or interesting historical facts about your organization?

We are celebrating the 10th year of our existence this year! We have grown from one employee to four in the past 10 years. Le Ann Wasmoen is the Executive Director. Cassie Metzinger is the Youth Prevention Coordinator, Chessa Quenzer is the Community Coordinator, and Tim Reinbold, Program Development Coordinator. The Coalition office is located at 1005 West 1st Street, Suite #2, Redfield. Cassie's primary office space is located at the Redfield School.

5. What are some things your organization does for the community?

Our SADD students do community service projects such as fill Nutrition

Mission bags, clean ditches, host substance-free alternative activities for students, create school and community-wide awareness campaigns on various topics such as mental health, substance use, safe driving, suicide, and many more! We also provide educational materials on lots of issues that residents are concerned about. The Coalition has offered Town Hall meetings, partnered with SDDC and the hospital for the Community Wellness Fair, and partnered with the Sheriff's Office to host National Night Out events in the county.

6. How many members do you currently have?

The Coalition is comprised of a Steering Committee of 7 members as well as many others who attend monthly meetings.

There are over 100 people on the Coalition email list that receives notifications of resources, trends, and trainings, as well as meeting notifications, agendas and minutes. We are excited about our expanding activities and projects! We would love to have more input on community needs that fit our mission. We would love to have you join us for our meetings or be included on our emailing list. Please contact Le Ann Wasmoen at 450-1385 or leann.wasmoen@k12.sd.us for more information.

7. What are some things your organization is currently involved in?

The Spink County Coalition started the weekly Narcotics Anonymous support group and is currently working on establishing a Recovery Home

in our county. We are also providing educational resources for tobacco cessation to the general population as well as for pregnant women. Although we had to cancel the Spink Area Support Network Summit, we are working to reschedule it for some time this summer. After the great success of the CORE Prevention Day that was held at the Redfield School last fall, we are planning for another event in October 2020. We are always looking for new grants to support our mission. We are currently pursuing a grant to provide grain bin safety equipment to our first responders and ag community.

Redfield Knights of Columbus: A part of the community for 183 years

The Knights of Columbus was founded on the principles of charity, unity and fraternity. The Knights of Columbus was established in 1882 by Father Michael J. McGivney assistant pastor of St Mary's Church in New Haven Conn. And a group of parishioners. Their intent was to bring financial aid and assistance to the sick, disabled and needy members and

their families. Today Father McGivney is being considered for sainthood.

Today the Knights of Columbus has 1.9 million members throughout the world.

South Dakota State Council Knights of Columbus was formed in 1904. South Dakota Knights of Columbus has almost 9000 members in 86 local councils.

The organizational

meeting to start Redfield Council was held November 13, 1928 Officers were elected December 29, 1928 with Fr MacConnache as the first Chaplain. H.A. Baur was elected the first Grand Knight. Seventy two candidates were obtained for the new council. Redfield Council covered a large area. By 1949 there were 340 members. In 1959 the council was split and new

councils were formed in Polo, Faulkton and Miller. The Redfield Council #2703 has it's meetings the second Thursday of each month at their hall located at 902 Commercial Lane in Redfield. There are currently 165 members in the Redfield Council. Doug Lemmer is the current Grand Knight. He is a fourth generation leader of the Redfield Council.

To be a member of the Knights of Columbus you must be a male, 18years old and a practicing Catholic.

Redfield Council does many community and youth projects. We give scholarships to graduating seniors. Host two blood drives per year. The Fourth of July has many events sponsored by the KC's. We have floats in the parade, hold bingo,

and provide concessions in the city park. The pedal tractor pull has been a big crowd pleaser for over 25years. Every year the Knights of Columbus holds a Free Throw Contest for ages 10 thru 14. Redfield Council raised \$20000 for Redfield Fire Department's first fire camera.

Q&A FEATURING: Redfield Kiwanis International

1. How did your organization get started and when?

Redfield Kiwanis was chartered February 3, 1922. The members were local businessmen. Guests were invited to present programs at the meetings.

2. What is the purpose of your organization? Where do you meet?

We support youth activities and the wellbeing of children in local communities wherever Kiwanis' chapters are present. We meet every Wednesday at noon at Leo's Restaurant.

3. How has your organization changed over the years/ what are some of the biggest changes?

In 1987 women were officially allowed to become members throughout the world.

4. What are some unique or interesting historical facts about your organization?

It isn't unique to Kiwanis but the sizes and number of clubs has decreased. It is hard to get volunteers in organizations and churches.

5. What are some things your organization does for the community?

Redfield Kiwanis had a history of working the Redfield baseball park concession stand but we gave it up after the 2017 season because of lack of members to work.

We sponsor a junior high track meet in cooperation with Redfield Public School.

We were the charter organization for Cub Scout Pack 128 and Boy Scout Troop 128. We provided financial assistance for texts and an enclosed

camping trailer for the scouts.

We award high school scholarships to Redfield seniors excelling in community service.

We support SADD, the Redfield youth center, Redfield Area Concert Association, Redfield Area Arts Council, the Hugh O'Brian Youth Leadership SD, the Redfield Baseball Association and the American Legion Wood Bat tournament. We organized and sponsored a Kiwanis One Day for several years with free food, entertainment and learning exhibits in the Redfield City Park. We have supported the Redfield Lions Nutrition Mission and numerous school projects including trips, national conventions, books and post prom plus many community causes over the years.

6. How many members do you currently have?
Ten members

7. What are some things your organization is currently involved in?

Getting the track meet/concession stand organized - depending on school policies for spring sports; waiting for scholarship applications.

8. Please include anything else you would like to add.

There always has been a need for good fellowship and service. Since the beginning of time, there was a need for camaraderie and the desire to support communities. The history of Kiwanis and how it began is, in large part, the story of how fellowship and service developed within an organization.

Call 472-0822 to order your press today!

REDFIELD SENIOR CENTER, NUTRITION SITE & PUBLIC TRANSIT



1. **Redfield Senior Citizens** is a non-profit organization providing happiness, health and safety to seniors so they may live a full and productive life in their own home. Anyone age 55 and over may join.

2. **Spink County Senior Citizens Council** is incorporated with groups in Doland, Conde, Mellette and Redfield. Each site also has it's individual club and delegates to the council. County funding is disbursed to each.

3. **Public Transit System** provides for the public Monday through Friday, 8 a.m. to 4 p.m. Wheelchair buses are available. State, Federal and local funds support this program. Anyone is eligible to ride with a suggested donation of \$2.00 one way or round trip.

For Information Call: Lisa Manning, Dr. - 472-1552

SENIOR NUTRITION PROJECT "More than a Meal"

Good Nutritious meals served Mon.-Fri. to those age 60 and older. Home delivered meals are available for shut-ins.

Come share a meal with old friends and meet new ones. We'd like you to join us!

For more information call
Anna Schwartz, Area Supervisor - 472-0155



WILBUR-ELLIS®

18100 US Highway 281 • Tulare, SD 57476
(605) 596-4200

Q&A FEATURING: Mike's Furniture

1. Is your business a family business? If so, how many generations has the business been in the family and how did it get started/ who started it?

We have been a family business for two generations. My dad was manager of Gambles Hardware Store from 1960-1968. He then purchased Gambles in 1968 and my brother Steve and I worked for him. We purchased the store from my dad in 1989.

2. What are some things that have changed about your business, or the way you conduct business, over the years?

The business changed from a hardware store to a furniture store in approximately 1990 with the same friendly service.

3. What are some unique or interesting historical facts about your business?

An interesting fact about the building is that there was once a hotel above the store that burned in the 1962 fire, leaving the business untouched.

4. What would you say has made your business long-standing and trustworthy in the community?

We provide friendly, trusted service while trying to adapt to what the customer's wants and needs are. We take advantage of furniture markets and all sorts of media to keep up with current trends. This helps us to pass along knowledgeable service.

5. What do you offer to the community through your business?

We carry furniture, home decor, gifts and lots of mattresses. We like to stay connected with our commu-

nity by contributing through various fundraisers and benefits. We feel giving back to the community is very important.

6. Where are you located?

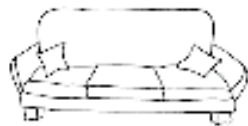
Mike's Furniture is located at 605 Main Street Redfield SD.

7. What is a motto or saying your business has lived by throughout the years?

At Mike's we don't really have a motto — Just treat the customers right!

8. Please include anything else you would like to add.

About four times a year, we have an open house, treating our customers to awesome music, tasty snacks and great prices. We want shopping with us to be a truly fun experience.



Hav-A-Rest Park & Campground

Location: US Hwy 212 West, next to Redfield Lake • has two modern comfort stations with showers, several water hydrants, additional port-a-potties strategically placed for your convenience & supervised by a park manager.



Park

2 playground facilities, 2 picnic shelters, a dump station, boat dock and ramp

Campground

19 campsites; each with 30-50 amp electricity, & 2 tent areas

Open: Mid – April through Mid – November

*Check In Time 2 pm *Check Out Time 12 pm

*Tent Area - \$5/night

*Pad with Electricity - \$15/night

*Self-registering is available at non-reserved campsites.

Payment is due when established at campsite.
Cash or Checks payable to the City of Redfield.

Redfield Park & Rec Registration 2019

Park & Rec Brochures

will be available APRIL 20, 2019

*at RDHS, Park & Rec Office (in Armory),
City Hall, Carnegie Library & Web
www.redfield-sd.com

*This will be the first day to register for
2020 summer recreational activities

Online Recreation is available at RedfieldRecreation.activityreg.com.
This will open April 19th as well

Open Reservations begin on April 1st

Contact: Parks & Rec. Office @ 605-472-4552
Monday - Friday 8-5. First come, First serve.

Reservations can be made online at
RedfieldRecreation.activityreg.com
or by calling the Park and Recreation office
at 472-4552

Confirmation will be given when
payment is received.

Payments can be
made at the
Park and Recreation Office at:
the Armory
309 3rd Street W.
Mon - Fri 8:00am - 5:00pm

Cities, colonies and townships in Spink County:

Cities in Spink County:	Brenford	Townships in Spink County:	Conde	Jefferson	Richfield
Ashton	Northville	Antelope	Cornwall	Lake	Spring
Athol		Athol	Crandon	La Prairie	Summer
Conde	Colonies in Spink County:	Belle Plaine	Exline	Lincoln	Tetonka
Doland	Clark Colony	Belmont	Frankfort	Lodi	Three Rivers
Frankfort	Spink Colony	Benton	Garfield	Mellette	Tulare
Mellette	Hillside Colony	Beotia	Great Bend	Northville	Turton
Tulare	Glendale Colony	Buffalo	Groveland	Olean	
Turton	Camrose Colony	Capitola	Harmony	Prairie Center	
Redfield (County Seat)			Harrison	Redfield	

Organizations in Spink County:

Organizations in Redfield, SD:	Family Career and Community Leaders of America Inc.	P.E.O.	ment Corp.	Order of the Eastern Star of SD	Organizations in Mellette SD:
4-H Clubs	Family Crisis Center	Redfield Area Concert Association	VFW Auxiliary		4-H Clubs
Aglow International	Fraternal Order of Police	Redfield Discovery Program	Girl Scouts		American Legion and American Legion Auxiliary
American Legion	Grow Spink Inc.	Redfield Ringneck Association	Organizations in Tulare, SD:	Organizations in Doland SD:	Mellette Community Development Foundation
American Legion Auxiliary	Independent Order of Odd Fellows	Redfield School Foundation	American Legion	4-H Clubs	Northwestern Community Foundation
Ancient Free and Accepted Masons of South Dakota	Lions Club	Redfield Soccer Association	American Legion Auxiliary	American Legion and American Legion Auxiliary	
Catholic Daughters of Americas	Kiwanis International	Spink County Coalition	Ancient Free and Accepted Masons of South Dakota	Beadle and Pink Enterprise Community	
Cottonwood Lake Association	Knights of Columbus	Spink County Historical Society	Hitchcock-Tulare School Foundation	Future Farmers of America	
	Modern Woodmen of America	Tulare Economic Development Corp.	Lions Club		

HEALTHCARE SERVICES PROVIDED BY COMMUNITY MEMORIAL HOSPITAL & REDFIELD CLINIC RIGHT HERE IN OUR COMMUNITY

Acute Care	eEmergency System	Nuclear Medicine
Ambulance	EKG	Out-Patient Observation
Anticoagulation Program	EMR - Hospital & Clinic	Pediatrics
CPR Classes	ePharmacy	Physical, Speech & Occupational Therapy
CT Scan	Emergency Room	Pulmonary Rehab
Cardiac Rehabilitation	Gastroscopy	Radiology
Cardiac Stress Test	Geriatrics	Respiratory Therapy
Chronic Care Management	Holter Monitors	Same Day Surgeries
Colonoscopy	Home Health	Sleep Studies
Continuous Glucose Monitor	Home Making Services/Private Pay	Swing Bed
Dexascan	Hospice	Telemedicine
Diabetic Education	In-Patient Services	Urgent Care
Digital Mammograms	Intensive/Coronary Care Unit	Various Healthcare Screening
Discharge Planning	Laboratory	Wound Care Treatment Center
Durable Medical Equipment (DME)	MRI / Ultrasound	

Call the Redfield Clinic to schedule your annual well check physical.



Community Memorial Hospital
111 West 10th Ave.
Redfield, SD 57469
605-472-1110

Redfield Clinic
1010 West 1st Street
Redfield, SD 57469
605-472-0510

<http://www.redfieldcmh.org>

Medical Staff

Matt Owens, MD; Kris Wren, MD
Alex Falk, MD; Ron Wren, PA
Andi Rische, NP; Heidi Gehrke PA
Gabe Gehrke, PA; Mary Wipf, PA

Redfield Clinic Services

Acute Illnesses
Allergy Injections
Annual Physicals
Chronic Health Management
DOT Physicals
Diagnostic Laboratory Testing
Family Planning
Immunizations
Flu Shots
Joint Injection
Laceration Repair
Lesion/Wart Removal
Occupational Health
Splinting/Casting
Sports Physicals
Transitional Care Management

Outreach Clinics / Telemedicine Services

Audiology	Oncology
Behavioral Health	Orthopedic
Outpatient Triage	Pediatrics
Cardiologist	Podiatrist
Endocrinology	Pulmonologist
Hepatology	Surgeon
Infectious Disease	Urogynecology
Nephrology	Urology

Spink County History: The Redfield Flour Mill

By Stacy Carroll

I have to say that I do love history, especially local history where I can go and see with my own eyes or visualize the space now where something once happened or a building once stood. When I was first told about a flour mill in Redfield, I'm not sure why but I was picturing flowers. I started picturing tulips and other flowers that grow from bulbs, etc. and how pretty that would be. Of course, I was quickly knocked back into reality when the story continued and they described the farmers bringing in their grain and how it helped this area grow as they had flour readily available for cooking and selling. As disappointed as I was that there were no tulip fields to discover, the story still interested me and so my research began.

Since working at the Press, I have learned that researching historical topics of interest is quite time

consuming. I found some great information from the book, Images of America Spink County and from the Spink County Historical Society, which is a great asset to our community and particularly to someone who is curious about Spink County and it's history.

The Kutnewsky brothers built the Redfield Flour Mill in or about 1882-85, southeast of the water tower in Redfield. Ben, Charlie, and Fred successfully operated the mill for many years. In the beginning, the mill used sandstone to grind wheat and horses to run the mill. The building was large in size, measuring 30 by 36 feet and five stories high and the engine house had a circular smokestack that towered at 65 feet high.

In 1900, modern machinery was installed and the mill operated 24 hours a day. A 50-horse power engine run by two large boilers helped operate the new equipment. This in-



creased production to 150 barrels of ground flour a day and the mill began to flourish, and our flour became well known all over the country. Flour was exported across the country from Chicago, New York and even England.

In the early 1900's, the Kutnewsky brothers sold the mill to a Minneapolis man, George Christian. As early as 1909, George was listed as the proprietor of Redfield Milling Co. in a Redfield business directory. Mr.

Christian then later sold the Redfield mill to local interested parties. I found documentation of the mill being a co-op in the 1920's, listed in a milling pamphlet as Redfield Co-Operative Mills. The mill was later purchased by Royal Patent Flour and was run as such until the 1930's or 40's. Severe competition from Eastern United States mills finally led the mill to close and eventually be dismantled.

I had high hopes that this story continued on



in some kind of great ending. Somehow at the office the topic of General Mills came about and I looked up and found out that 27 different mills came together to form the company. I started doing some research on General Mills and came across a listing for a Royal Milling Company that joined the company in 1928. That made me pretty excited at the possibility that our mill might have been part of the start of General Mills. I kept researching

and I finally found the details of the companies that combined to form General Mills. Who was listed? The Royal Milling Company of- Great Falls, Montana! Unfortunately, I couldn't find any further information on the Royal Milling Company or the exact date of closure of the Redfield Mill. Local rumors still remain though, that our mill may have sold flour to General Mills before closing, but is not substantiated.



1227 E 3rd St • Redfield, SD
(605) 472-0300



Q&A FEATURING: Mike's Furniture

Is your business a family business? If so, how many generations has the business been in the family and how did it get started/ who started it?

Yes, a 2-generation business. Started in February of 1964 by our father, Bill Noyes along with Leo Ward. In 1965, Bill bought out Leo Ward's interest in the café.

What are some things that have changed about your business, or the way you conduct business, over the years?

Health practices and oversight has improved. Food safe requirements are more stringent than years ago.

What are some unique or interesting historical facts about your business?

Started business in 1964, and moved into our current location in 1983.

What would you say has made your business long-standing and trustworthy in the community?

Striving to put out consistently good food.

tently good food.

What do you offer to the community through your business?

Leo's has always been an active supporter of school, community and religious organizations.

Where are you located?

602 North Main Street, Redfield, SD

What is a motto or saying your business has lived by throughout the years?

"Preparing Good Food is our business and serving it to you in a cheerful and efficient manner is our goal."

Please include anything else you would like to add.

About four times a year, we have an open house, treating our customers to awesome music, tasty snacks and great prices. We want shopping with us to be a truly fun experience.

Q&A FEATURING: Redfield Girl Scouts

2. What is the purpose of your organization? Where do you meet?

The Girl Scouts were started in Redfield to have a program offering character building activities to benefit all grade-school-age girls in Redfield. Since it's start, generations of Girl Scouts have continued the program that continues to build girls of courage, confidence and character who make the world a better place.

We currently meet once a month in the Girl Scout Room above the Dakota Dental office. Dr. Yeoman allows us space to store our supplies and have meetings there.

3. How has your organization changed over the years/ what are some of the biggest changes?

The uniforms have changed throughout the years, but the ideals have remained steadfast.

5. What are some things your organization does

for the community?

We've offered the Easter Egg Hunt in the past, picked up garbage in the City Park, we have visited people in the Eastern Star Home, we sell Girl Scout Nuts and Cookies to people in Redfield and surrounding communities through contacts,

This year we are partnering with Discover Kids to

have the Easter Egg Hunt if it's feasible at that time.

6. How many members do you currently have?

We currently have 18 girl scouts in the Redfield Girl Scout Troop 46411.

7. What are some things your organization is currently involved in?

Right now the Girl Scout Cookie Sale is in progress

until March 30th. The Girl Scout troops earn money for their troop by selling nuts and cookies. Those funds help to send girls to events and camps.

8. Please include any-

thing else you would like to add.

Throughout the years from 1980 to present we have had seven girls in the Redfield Girl Scouts earn their Gold Award


which is the highest award in Girl Scouting. Senior scouts must complete a planned project to earn the award.

GIRL SCOUTS/pg.10

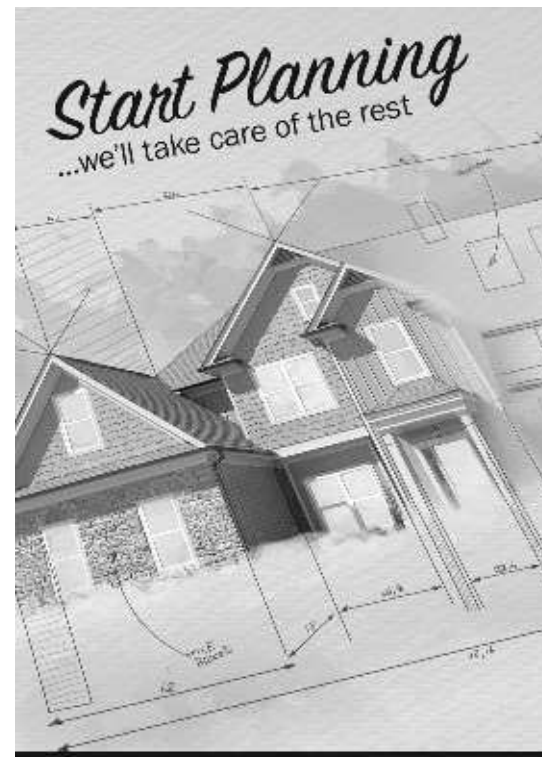
FSB

FARMERS STATE BANK

BANKING ON YOU SINCE 1915



897-6532 • Turton, SD 57477
Member FDIC



CONSTRUCTION
and
HOME IMPROVEMENT

loan rates as low as
2.85% *apr

Dakotaland
FEDERAL CREDIT UNION



*annual percentage rate

509 N. Main St. | Redfield, SD 57469
www.DakotalandFCU.com | 605.472.3882



NMLS # 657864

HOTEL PHOTOS FROM REDFIELD HISTORY...



PHOTO CONTRIBUTED

Above, the Foster Hotel was built in Redfield in the early 1880's. It was located just North of the Chicago and NorthWestern Depot. The original guest sign-in book is now located at the Depot.



PHOTO CONTRIBUTED

Above, the Harlan Packard Hotel was formerly located on the corner of sixth avenue and Main Street in Redfield. The first floor consisted of a lounge area and liquor store. On Thursday nights, the hotel had live bands and dances. Today, Redfield's hotels include the Super 8, Wilson Motor Inn and Eidelweiss Inn.

GIRL SCOUTS/ from pg.9

There were three in 1994, three in 1998, and one in 2014. The second highest level is the Silver Award which also requires

completion of a project by Cadettes. Since 1980, ten girls have earned that award. A Bronze award was developed later in the

program for the Junior level of Girl Scouts. Seven girls have earned that award.

Call 472-0822 to order your press today!



**ADM-Benson Quinn
Hitchcock-Tulare
605-266-2530**

**Located at Hwy 281 & 28
www.adm.com/Hitchcock-Tulare
A Division of Archer Daniels Midland Company**



ethanol
fueling America's future™

Redfield Energy LLC

302-0090 • Redfield
www.redfieldenergy.com

DOLAND SCHOOL DISTRICT

H. HUMPHREY
TULARE

Doland School District has an enrollment of 153 students. Projected enrollments expect Doland School numbers to remain consistent for years to come. The percent of classes *not* being taught by highly qualified teachers for Doland School District is 0%.

The Doland School will have a new addition finished this spring. The new addition will include a lunchroom, kitchen, high school classrooms, Ag shop, offices, primary entrance and a music room. The school is looking forward to this new addition and feels it will be a great addition to the school.

The Doland School District is enjoying the four-day school week. The Doland School District is in the tenth year of the four-day school week and has many benefits of the four-day school week. Doland School is one of the few four day schools that provides a meal and transportation for students on tutor Fridays.

The Doland School District continues to be advanced in technology education. Students in grades 3-12 are one to one with technology. The school continues to educate their teachers and students to prepare them for life after high school with technology.

The Doland FCCLA has had students qualify for nationals. The Doland Stu-

dent Council provides a positive impact for students. The FFA program has continued to grow with having a region president representative. While being a small school, the extracurricular activities encourage students to compete at any level and develop lifelong positive characteristics.

The Doland School has maintained a pre-school program. The pre-school is for students who have turned 4 and 3 by September 1. The 4 year old pre-school meets two days a week all day long. The 3 year old group meets twice a week for morning only.

The Doland School has award winners at the NSU science fair. The students put on a Science Fair this year with Hitchcock-Tulare High School, Chemistry Days and other assemblies for the entire school.

Several community and alumni scholarship programs recognize the accomplishments of our graduates annually. An average senior class from Doland School accumulates over \$38,500 in scholarship incentives from the community and alumni scholarship programs alone, excluding other scholarship opportunities. This school district is very fortunate to have a community and alumni so supportive of the local district.

Hitchcock/Tulare School



The Hitchcock-Tulare School District is in its 16th year as a consolidated district and currently has 242 students enrolled in the district PK through 12th grade. Hitchcock has the PK-6 attendance center with 99 students; the junior and senior high is located in Tulare with 33 students in the junior high and 55 in the high school. The district also has two colony attendance centers with Spink Colony having 33 students and Glendale Colony with 24 students in K-8. We are in our 10th year on a 4-day calendar, which utilizes Friday's for classroom enhancement and professional development. Staff and students both utilize Friday's to work on improving themselves through additional work, collaboration, and professional development offerings.

We have new Pre-school program this year, which is available to 4-year-old students on Tuesdays and Thursdays. Students go all day and transportation is provided for those living in our district.

Our district is 1-to-1 with technology from Kindergarten through 12th grade. Our K-3 students all have their own iPad to use throughout the day and students in grades 4-12 have their

own Chromebook or laptop to use at school as well as at home for the older students.

Some projects that involve the K-6 students are the accelerated reading program, 5th and 6th grade basketball, 3rd - 6th grade volleyball, 4th-6th football, grades 1-6 spelling bee, the Geographic Bee and our annual track and field day. Our elementary students are in self-contained classrooms where they receive instruction in all the core content areas and also have PE and Music two times per week. We also offer band to 5th and 6th grade students two times per week.

The 7-12 attendance center, offers a wide variety of academics including advance placement classes over the DDN as well as dual credit courses through a variety of post secondary schools. The district also has strong participation in FFA, FCCLA, band and choir, sports, oral interpretation, class plays and yearbook. We also offer an Audio Visual Class, which manages the Hitchcock-Tulare School TV Station that is sponsored by Venture Communications. H-T TV can be found on channel 384 for those people that subscribe to cable TV from Venture Communications.

All of these things help us provide a well-rounded education for the students that attend Hitchcock-Tulare as we help them become college, career, and life ready.



The last construction phase of Redfield Public School's elementary building, auditorium and auxiliary gym has been completed. The elementary students started the school year in their new building this year.



Northwestern Area School District, located in Mellette, S.D., provides a friendly, small-town atmosphere for 300 students from the surrounding communities in grades K-12. Students receive a top-notch education with highly regarded academic programs and extracurricular activities.

Academically, Northwestern offers elective courses in art, business, music, agriculture and wellness in addition to the core curriculum. Students enjoy one-on-one attention with staff members, while they also have the opportunity to take high school, dual-credit, and AP classes online.

Northwestern can boast it has been 1:1 with technology devices in grades K-12 since 2010 with the release of the iPad. We issue iPads to students in grades K-8 and laptops in grades 9-12. Nearly every classroom is equipped with a mounted, wireless LCD projector, and interactive whiteboards have recently been installed in elementary classrooms.

Organizations such as Future Business Leaders of America, Journalism, Drama Club, Fellowship of Christian Athletes, FFA, and Student Council provide students with additional learning opportunities outside the classroom. FBLA advances several students to the national convention each

year. The screen-printing business run by the students encompass both the art and business programs to make high-quality apparel for organizations inside and outside of the school. In addition to performing a spring play, the Drama Club advances thespians to the state competition in oral interpretation and one-act play. The journalism class produces the all-state yearbook, live streams school events, and produces digital media. The student council organizes and manages all homecoming festivities. The FFA program allows students to explore agricultural interests and attends several events around the state each year.

Athletically, Northwestern has played in 24 state championships, bringing home 14 state titles. Northwestern possesses a strong tradition of volleyball, cross country, football, basketball, track and field, competition cheer and dance, as well as wrestling. Northwestern athletes work out in a facility that features two gymnasiums, a weight room, a cardio room and a full-size football field with a concession stand and skybox seating.

A consolidated school district, Northwestern provides educational services to the towns of Ashton, Athol, Brentford, Chelsea, Conde, Cresbard, Mansfield, Mellette and Northville. With tremendous support from parents, staff, patrons, the Booster Club, the Northwestern Community Foundation and the Plains Lions Club, Northwestern students receive a first-rate education and are the pride of their communities.

ODLAND

Construction & Gravel

- Concrete Work • Basements • Walls
- Floor • Driveways • Sidewalks
- Stamped Concrete
- Colored Concrete
- Crushed & Screened Gravel
 - Pit Run Gravel
 - Oversize Rock
- Red Rock • Pea Rock
- Landscape Rock
- 1" Washed Rock
- Boulders • Black Dirt
 - Skid Loader
 - Backhoe
- Payloader • Grader
- Dozer • Truck Hauling



For all of your concrete and gravel needs, call:
Clayton Odland **Tim Odland**
605-460-1597 605-460-1596



Redfield Food Center



516 North Main • Redfield, SD • 472-472-0424
We accept Credit Cards, WIC, EBT
Check us out on our new website
www.redfieldfoodcenter.com